



we can help you with **light**





WELCOME HOME.

Light is a key component of welcoming and comfortable homes. Light chases away darkness and reveals a home's unique details while supporting every moment of our daily lives.

The right light illuminates smiles and brightens moods. It is the romance of candlelight, the beauty of sunsets, and the twinkle of stars. In the hands of dedicated professionals, lighting can bring the magic of light to life in your home.

Light can help us wake gently in the morning, accomplish more during the day, relax better in the evening, and even sleep more deeply at night. Light can help you live your best life. And we can help you with light.



IS IT LIGHTING **LAYOUT...**

Lighting layouts are necessary to meet the minimum standards of the electrical code, like having receptacles on the walls. But those circles on the plans may not translate into comfortable and inviting spaces.

Chandeliers may put light on the ceiling and leave the dining table dark. Downlights in the kitchen may cause harsh shadows on counters. And lights in the vaulted ceiling may introduce glare that makes a home less inviting every evening; but light can do so much more.

While there may be enough light to see what you're doing, like in the photo and rendering above, lighting layouts can result in distracting shadows, harsh glare, and far less comfortable homes.



...OR LIGHTING DESIGN?

Our team of professional lighting designers combine the biology, geometry, and psychology of light to support better living, and that makes everything different.

The texture of natural stone is grazed behind the fireplace, the beauty of art and photography is uncovered, decorative fixtures are dimmed to look just right, and the natural warmth of wood in the cabinetry, door, and floor is revealed.

Most homes are built with lighting layouts that provide light in the same manner as found in gas stations and discount big box stores: plenty of light in tidy rows high above. Lighting design is different, from beginning to end. The result is a home that is more welcoming, relaxing, and comfortable every single evening.

RESTORE YOUR **NATURAL RANGE** OF LIGHT

Our direct biological connection to the rise and fall of the sun impacts every moment of our lives. The natural rhythm of light alters our energy, mood, memory, and cognition; our eyes even seek light when we are asleep.

We need softly changing light to be healthy, yet most of our homes and workplaces use the same light all day and into the evening. By living in this state of twilight, we are unable to correctly regulate sleep, alertness, and a host of biological processes.

It is now possible to have Dynamic electric light that restores our natural range of light, repairing our synchronicity and improving our wellbeing.



Static Color



Warm Dim



Tunable White

Dynamic Color

natural **colors**

mirror the sun's changes throughout the day, using modern technologies to replicate daylight in the home.

responsive **shading**

anticipates your needs and protects your eyes from harm. Automated shades can also keep out sleep-disrupting electric light--and rise slowly before dawn so you wake naturally with the sunrise.

bio-inspired **geometry**

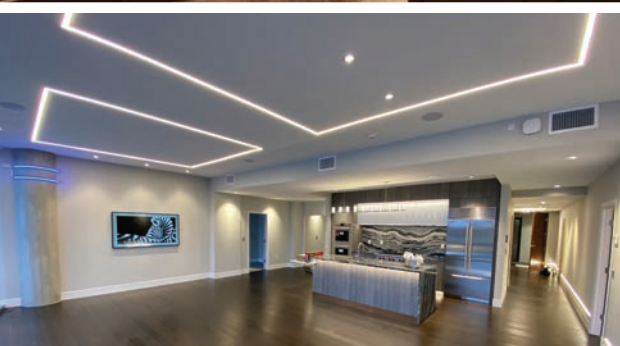
places layers of illumination where light can have the most beneficial impact on your health. Echoing the angle of the sun indoors, we get better sleep, more gentle waking, higher alertness--and a beautiful home.

restored **range**

includes crisp cool whites midday, gentle warm whites in the evening, and even the soft colors of sunrise as our days begin.

perfect **tempo**

synchronizes our lighting with natural rhythms and makes our lives easier. By constantly adjusting throughout the day, modern controls can track the sun and change our indoor lighting to match.



HOW **WE** DO IT

Our lighting designers track the latest research and separate the dubious marketing claims from the peer-reviewed studies that reveal how light can help you live your best life.

With over 75 years of collective experience, we have designed homes from the eastern seaboard to the Pacific northwest and numerous locations between. We work with all of the local, national, and international recommended practices for lighting that protect your wellbeing while minimizing environmental impact.

In addition to residential lighting, we complete an ever-expanding number of commercial, hospitality, and entertainment projects every year. The result is a flexible team that can help make your home just right.

WHAT IT COSTS

Cost-consciousness is woven into our approach to lighting design. We offer several service levels from low-cost planning to concierge-level, exquisitely detailed solutions and we can help you choose the right service to fit your needs and your budget.

We help you make informed choices about your home's lighting that fit your budget goals, and ensure that your home is as welcoming, comfortable, functional, and beautiful as can be. Using our data from past projects and your values to guide your budget, we give you a design free of unwelcome surprises and costly, time intensive redesigns.

Better lighting almost always requires a larger investment, but we respond to your lighting needs with solutions that keep your budget in mind.



OUR **SIGNATURE** PROCESS

discover

Lighting design is the process of making informed decisions about light for *your* home. By understanding how you want to live in your home, your priorities and values, and even the conditions of your eyes, we can propose the right solutions. We use plans, photographs or a custom-built digital 3D model so we can understand how it will be built, even before the foundation is dug.

design

Combining *your* goals with *our* expertise is our second phase. Our team uses a unique digital sketching process to imagine different possibilities for your home. We show you numerous options, different combinations of layers, and even color-changing concepts for better living. We remove the mystery of lighting and invite you to see your home in, well, a whole new light.

develop

The third phase includes revisions incorporating your feedback and your budget needs. Our designers revise sketches, sketch additional spaces, and prepare preliminary lighting plans for review. We continue discussing your budget using data from our past projects, along with technology options, to stay aligned with your investment needs.

deliver

Our process ends when light fixtures are purchased, installed, and ultimately commissioned in the finished home. Our documentation--including plans, specifications, details and guides for the contractors--is the most comprehensive package of information in the industry. Why? Because we want your home to be perfect.





OUR ESSENTIAL PROCESS

is faster and surprisingly affordable

discover

As in our Signature service, we seek to understand how you want to live in your home, your priorities and values, and even the conditions of your eyes so we can propose the right solutions. We will walk through your home virtually by using plans or photographs and get started right away.

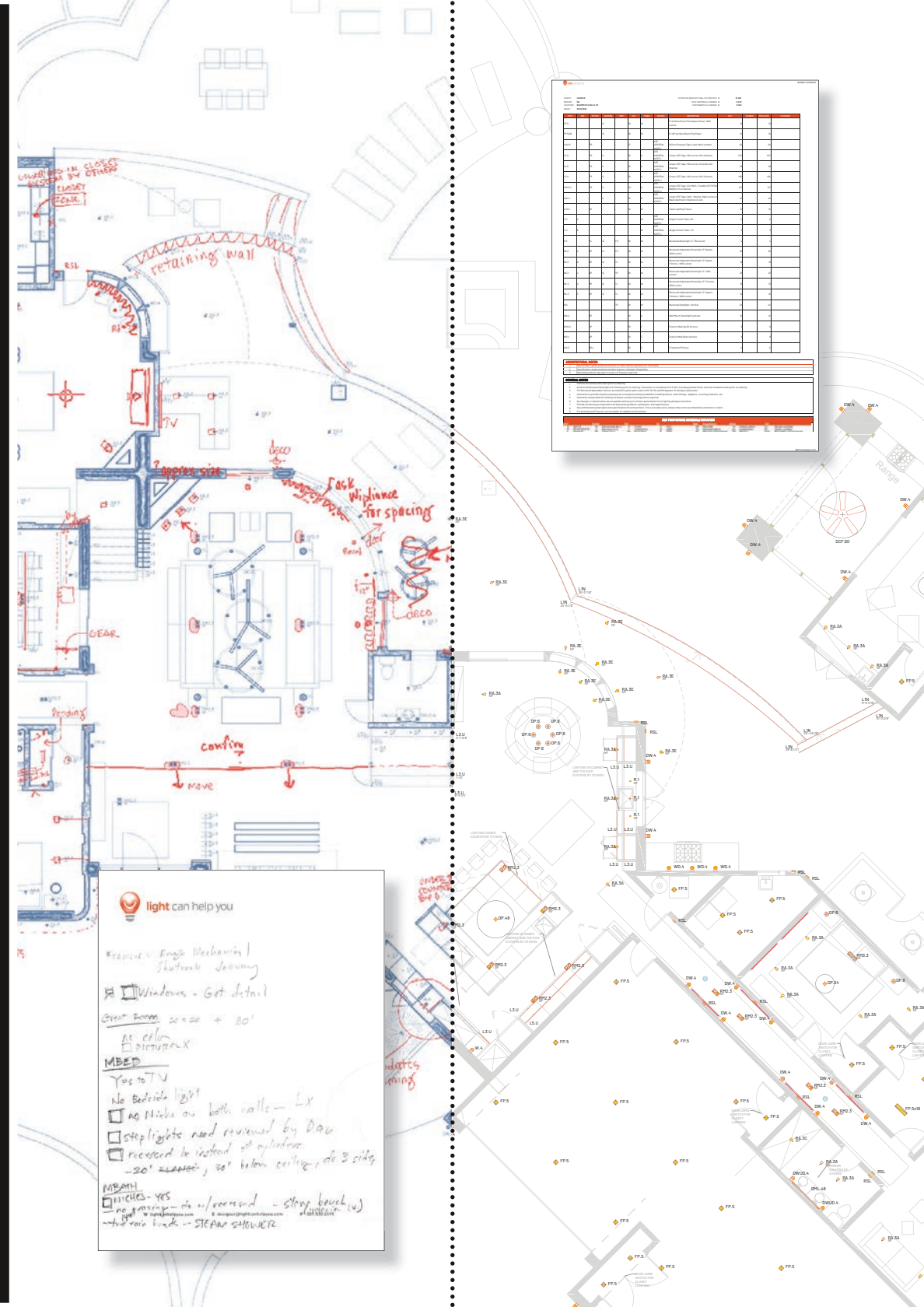
design

We quickly generate a set of preliminary lighting plans for discussion in our Design meeting. We infuse the same expertise and experience as our most exclusive projects into every plan, supplementing the conversation with photographs of examples to help you understand the look and feel.

deliver

To finish, we prepare comprehensive documentation for your contractor including plans, specifications, standard details, and guides. We take pride in delivering the most comprehensive package of information in the industry, even in our most essential of services.

Our Essential service is a popular, lower cost, faster alternative to our Signature service.





OUR **UNLIMITED** SERVICE goes above and beyond

your dream

Our Unlimited service is a truly concierge-level process that is bound by your dreams, not our structure. We can incorporate everything from our Signature process and add extra meetings, custom mockups, additional details, higher level renderings, and more diverse solutions.

our team

Our most discerning clients require the deeper attention of our lighting experts. We match your project to a designer with the right skillset and build a support team to complete the work. We may add one of our computerized lighting calculation experts to the team to mathematically solve soaring ceiling conditions, a principal designer to help shape the design concepts, or a CAD specialist for more comprehensive documentation.

just right

Perhaps you are attracted to our Signature process but want to dig deeper into the wellness aspects of light, or you want your home to feature lighting solutions that have never been done before: Unlimited is the perfect choice. Large or small, ornately detailed or simply modern, our team can respond to your project's every need with the open-ended hourly contract of our Unlimited service.





different. delivered.

NO SPECIFICATIONS

Lighting layouts leave the fixture choice open and unpredictable.

NO BUDGET

If you are never invited to discuss the budget, how do you know it is the right level of investment?

NO GUIDES

A plan is only the beginning; where are the installation details?

NO CHOICE

Many clients are given no choice when it comes to architectural lighting. Why?

Tidy rows of fixtures aligned with the centerline of the room look nice and organized on a plan--and usually indicate missed opportunities. It is sadly frequent to see a set of plans for a multi-million-dollar home with four cans and a fan in the master bedroom, wasting light on the floor and leaving the room poorly illuminated.

Lighting design is different from start to finish, and just looking at a set of plans can reveal the shift. Lighting layouts typically include the absolute minimum required to obtain a building permit, and nothing more.

Our design deliverables include the most detailed drawings your builder has ever seen, exact fixture specifications, installation guides, and carefully crafted details. The better the documentation, the easier the build and the better the results.

HOW INVOLVED DO YOU WANT TO BE?

Our different service levels allow you to be as hands-on or hands-off as you like. Do you want us to take care of the design with very little input from you? Or would you like to meet often to share your ideas and make choices throughout the process? We can develop great lighting for your home, whether in one meeting or dozens.

HOW MUCH WILL THE DESIGN COST?

Design services are custom-tailored to your home and prices will vary accordingly. While typical lighting design services go north of \$5 per square foot, ours can be half as much, or even less. Share your drawings with us and we will quickly provide a detailed proposal for your project.

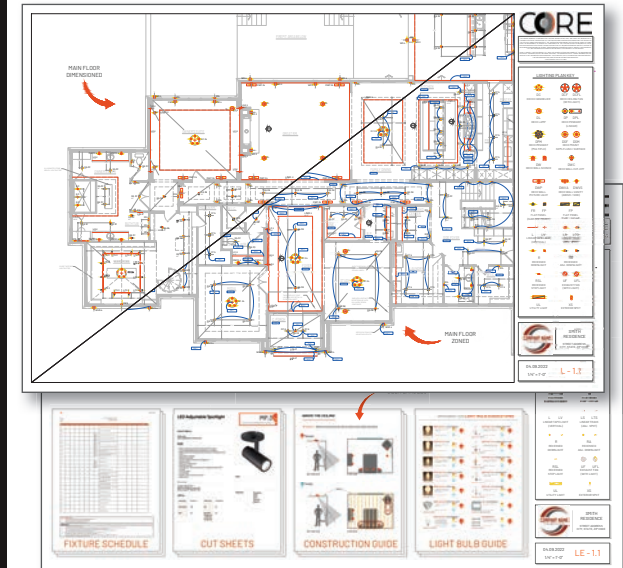
HOW MUCH WILL THE FIXTURES COST?

Our design team tracks hundreds of fixture options across many pricepoints to deliver a design that fits your investment. We work with you through the process to develop the budget, and we're not done until we've met your target. We see architectural lighting fixture budgets that range from \$1/ft² up to \$40/ft², but most luxury homes are well-served at around \$15-\$20/ft².

HOW LONG WILL IT TAKE?

Our services range from ultra-fast Essential to as-long-as-it-takes Unlimited. Most homeowners find our Signature service to be the perfect blend of luxury and value; we typically allow 5-8 weeks for design so you have plenty of time to make decisions.

CORE



BLAZING FAST PLANS

speed:



customization:



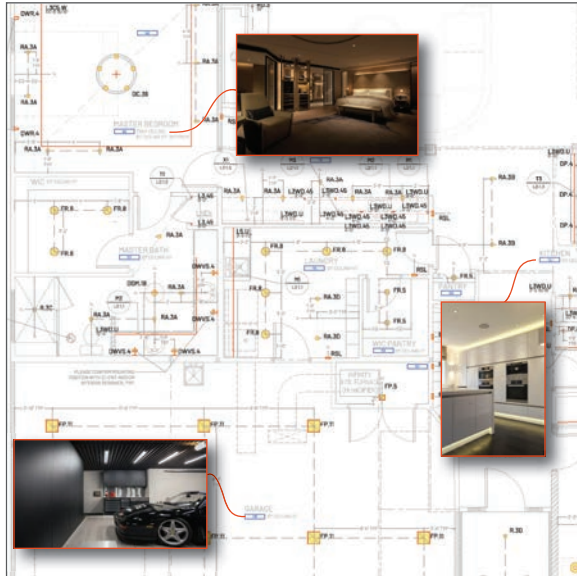
cost:



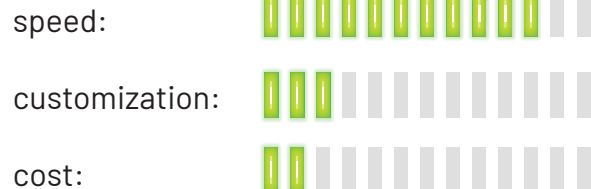
CHOOSE FOR:

- Expert layouts by lighting specialists
- Comprehensive Fixture Specifications
- Value pricing
- Completed plans in under 2 weeks

ESSENTIAL



WELL-PLANNED LIGHTING



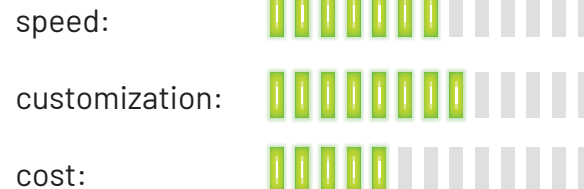
CHOOSE FOR:

- 5x better lighting than a typical layout
- Experts that handle everything
- Most competitive pricing
- Completed plans in 3-4 weeks

SIGNATURE



REVOLUTIONARY DESIGN



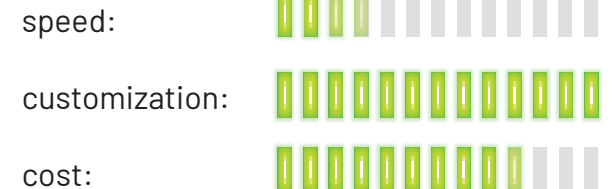
CHOOSE FOR:

- 3d sketches of light in your home
- Exploring light & wellness
- Fixed scope & fee
- Complete design in 5-8 weeks

UNLIMITED



UNPARALLELED ATTENTION



CHOOSE FOR:

- The *best* design—PERIOD
- Unlimited attention to detail
- A dedicated lighting concierge
- Unlimited support
- 2-6 month design process

READY TO GET **STARTED?**

schedule

Contact us to schedule an introduction; we are here to answer questions, help select the right service for your project, and connect you to a dedicated design team. We also provide pricing options and share detailed proposals to help you decide.

survey

You will receive a comprehensive intake survey to complete whenever it is most convenient. We will use the information to guide our conversations and solutions, and we will check in with you at each stage of the process to make sure we are on track.

meet

Our team will meet with you remotely throughout the process so you can be a part of the conversation no matter where you happen to be, minimizing the disruption to your schedule. Getting you into your beautiful new home is the priority.

**WE KNOW THAT BETTER LIGHTING CAN
HELP YOU LIVE A BETTER LIFE.
AND WE CAN HELP YOU WITH LIGHT.**







light can help you
designer@lightcanhelpyou.com
(608) 302-6948